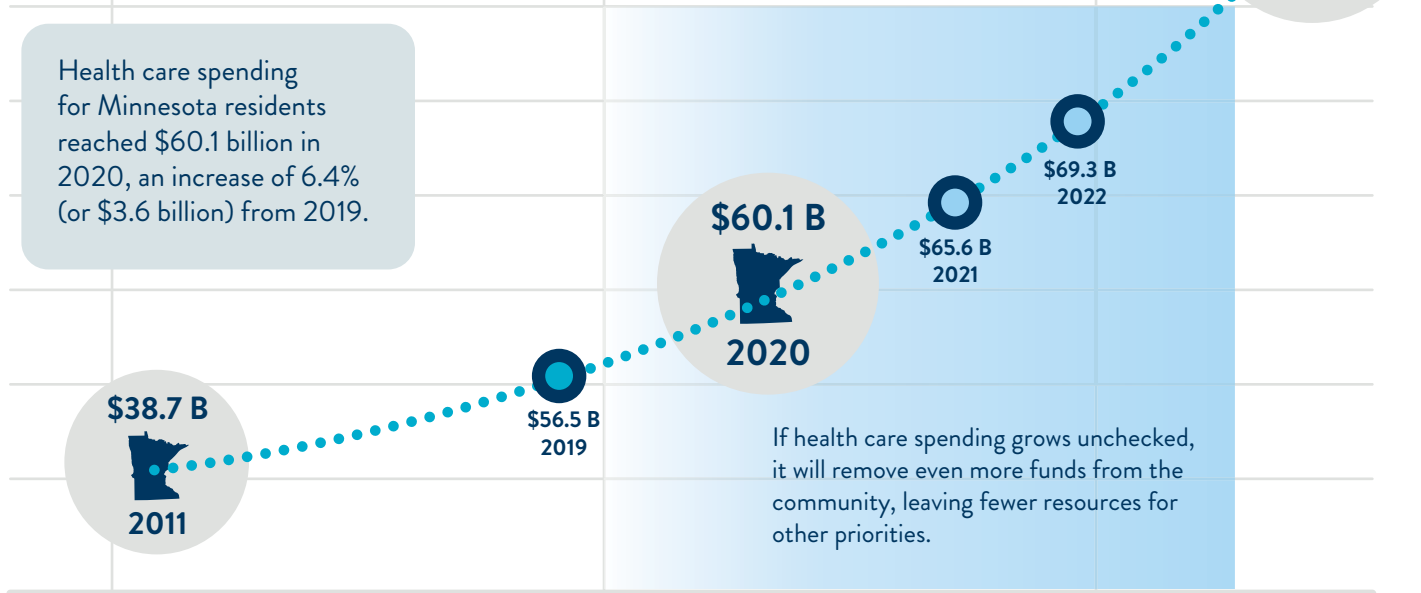
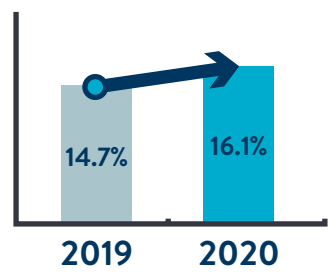
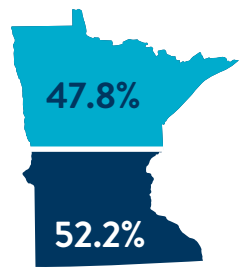


Key findings from 2020 health care spending



COVID-19 pandemic support spending changed previous trends

For the first time, private payer spending represented less than half of total health care spending in the state.



Due to the economic downturn in 2020, health care spending as a proportion of the state's economy increased to 16.1%.

For additional information and the complete report, please visit the [Minnesota Department of Health, Health Economics website \(www.health.mn.gov/data/economics\)](http://www.health.mn.gov/data/economics).

2020

The infusion of one-time COVID-19 financial supports, to assist health care and public health systems respond to the pandemic, was the primary driver of growth.



Health care spending by hospital entities – in inpatient and outpatient settings – remained the largest spending category at over \$20 billion, accounting for 33.4% of total spending. It contributed 27.7% to total spending growth.

