

Weekly Influenza & Respiratory Illness Activity Report

A summary of influenza surveillance indicators prepared by the Division of Infectious Disease Epidemiology Prevention & Control

Summary of the 2017-18 Influenza Season

Summary of the 2017-18 Season:

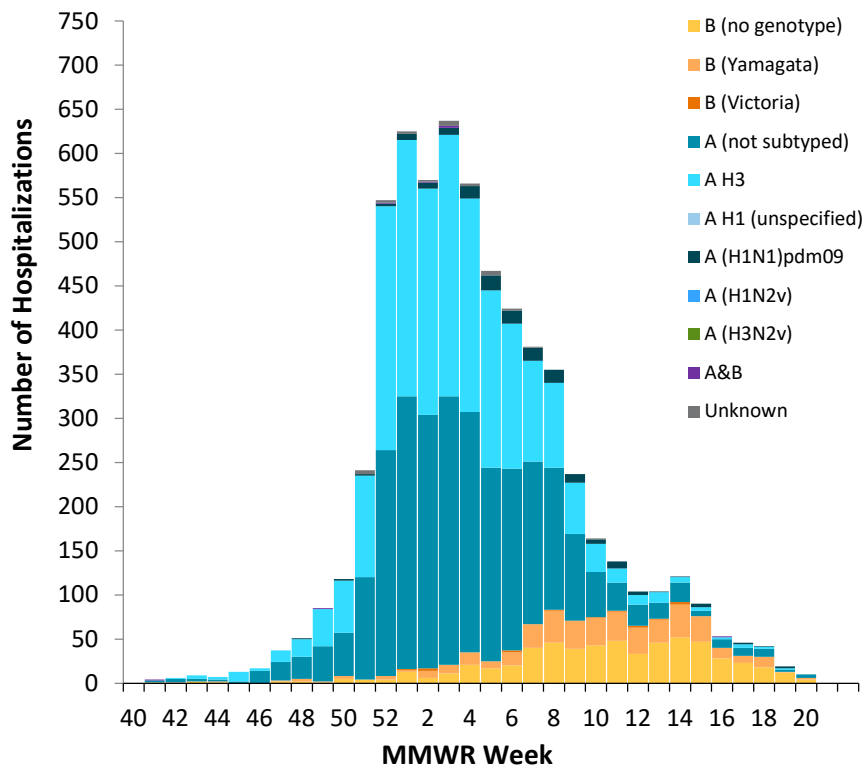
- 6,288 people were hospitalized with laboratory-confirmed influenza
- 6 pediatric influenza-related deaths were confirmed
- 211 outbreaks of influenza in long-term care facilities were reported
- 699 outbreaks of ILI in schools were reported

Minnesota Influenza Surveillance:	http://www.health.state.mn.us/diseases/flu/stats/
Weekly U.S. Influenza Surveillance Report:	http://www.cdc.gov/flu/weekly/
World Health Organization (WHO) Surveillance:	http://www.who.int/influenza/surveillance_monitoring/updates/en/
Neighboring states' influenza information:	
Iowa	http://www.idph.state.ia.us/IdphArchive/Archive.aspx?channel=FluReports
Wisconsin	http://www.dhs.wisconsin.gov/communicable/influenza/surveillance.htm
North Dakota	http://www.ndflu.com/default.aspx
South Dakota	http://doh.sd.gov/diseases/infectious/flu/

Hospitalized Influenza Surveillance

Hospitalized influenza cases are based on disease reports of laboratory-positive influenza (via DFA, IFA, viral culture, EIA, rapid test, paired serological tests or RT-PCR) and specimens from hospitalized patients with acute respiratory illness submitted to MDH-PHL by hospitals and laboratories.

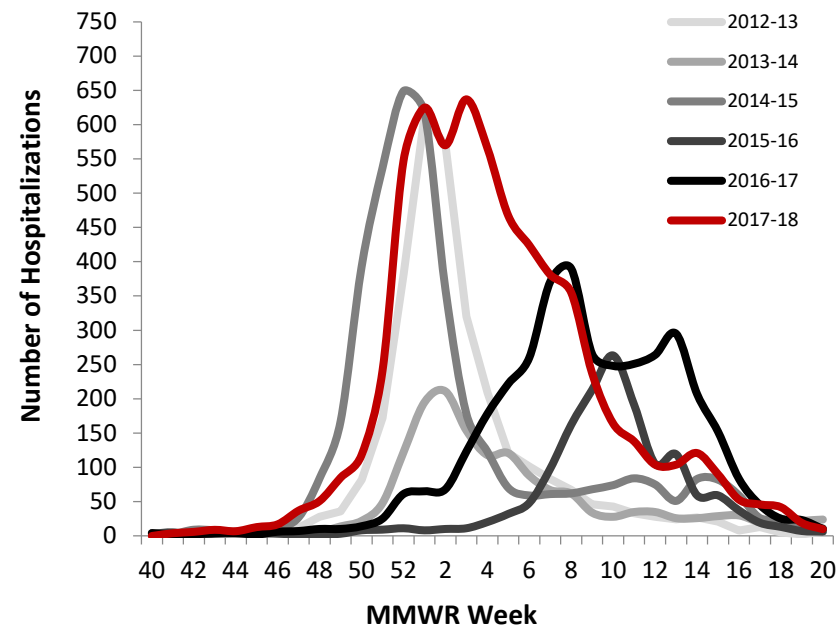
Hospitalized Influenza Cases by Type Minnesota (FluSurv-NET*)



Total hospitalizations

6,288

Hospitalized Influenza Cases by Season, Minnesota (FluSurv-NET*)

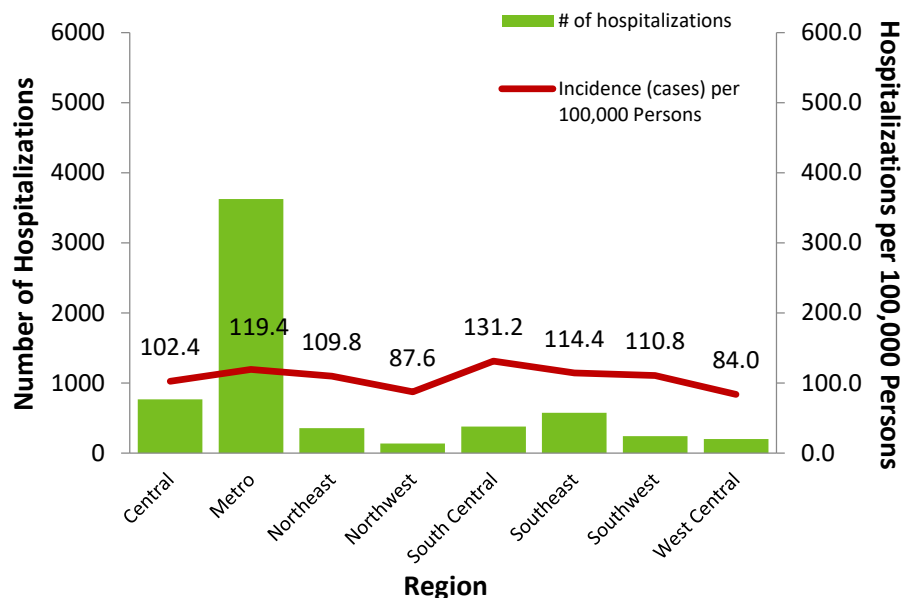


Season	Total hospitalizations (historic)
2012-2013	3,075
2013-2014	1,578
2014-2015	4,081
2015-2016	1,538
2016-2017	3,695
2017-2018	6,288

*Influenza Surveillance Network

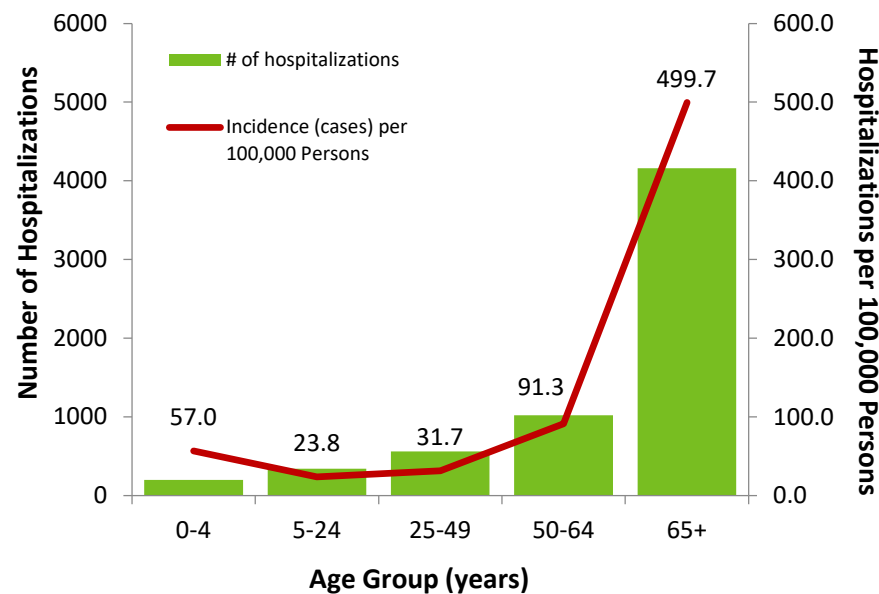
Hospitalized Influenza Surveillance (continued)

Number of Influenza Hospitalizations and Incidence by Region, Minnesota 2017-18 Influenza Season



Region	Total
Central	768 (12%)
Metro	3,623 (58%)
Northeast	357 (6%)
Northwest	139 (2%)
South Central	381 (6%)
Southeast	577 (9%)
Southwest	241 (4%)
West Central	202 (3%)

Number of Influenza Hospitalizations and Incidence by Age, Minnesota 2017-18 Influenza Season



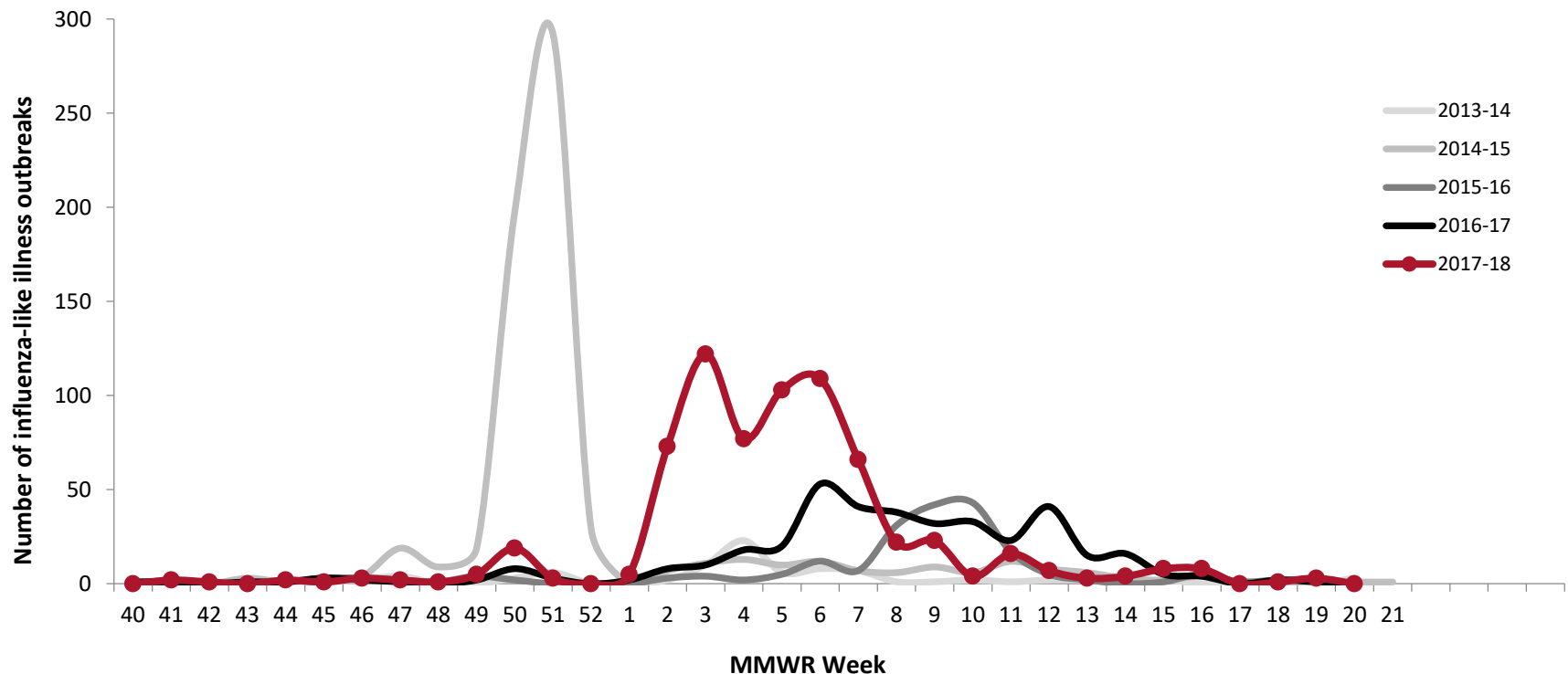
Median age (years) at time of admission
73.0

Respiratory Disease Outbreak Surveillance

School Outbreaks

K-12 schools report an outbreak of influenza-like illness (ILI) when the number of students absent with ILI reaches 5% of total enrollment or three or more students with ILI are absent from the same elementary classroom.

Influenza-like Illness (ILI) in Schools by Season



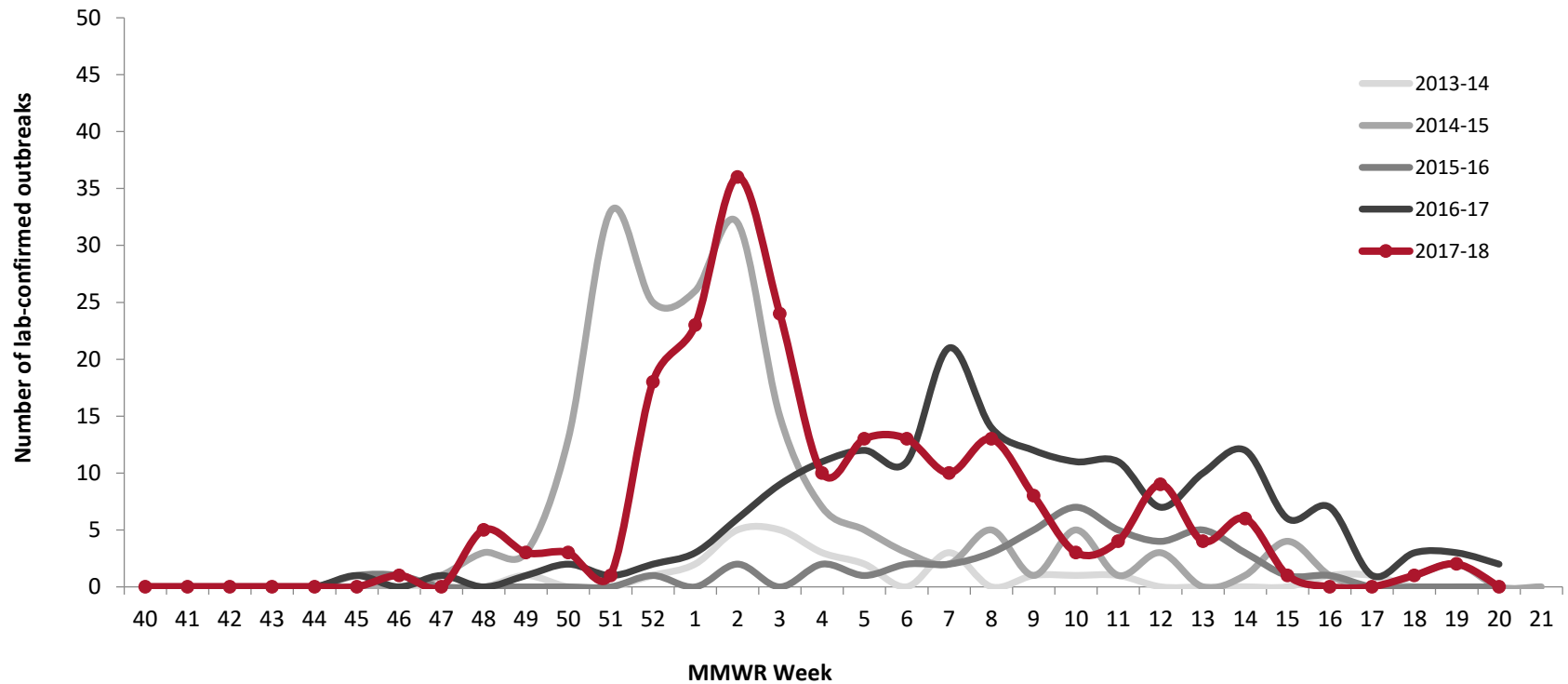
Total this season

699

Long-Term Care (LTC) Outbreaks

LTC facilities report to MDH when they suspect an outbreak of influenza in their facility. Laboratory-confirmed outbreaks are reported here.

Confirmed Influenza Outbreaks in LTC by Season



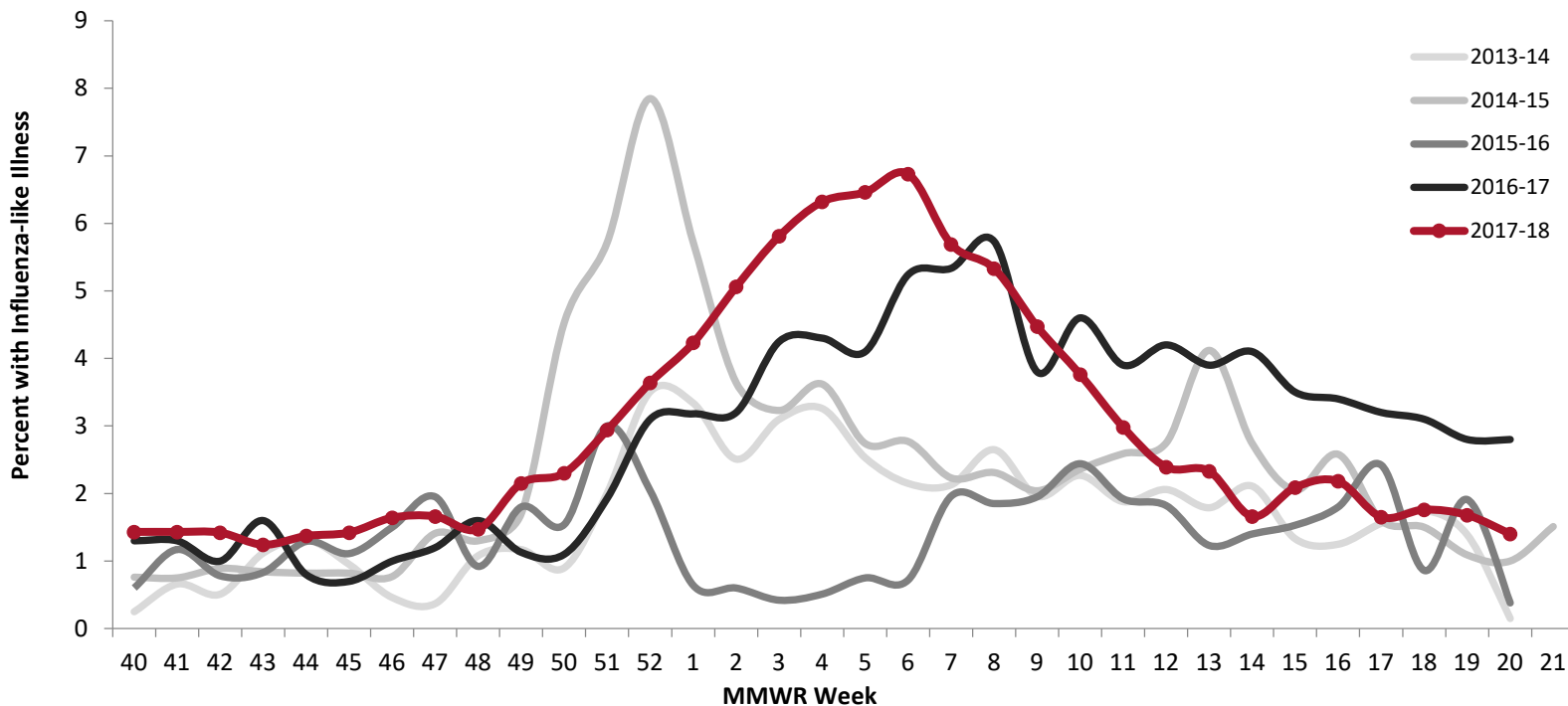
Total this season

211

Sentinel Provider Surveillance (Outpatients)

MDH collaborates with healthcare providers who report the total number of patients seen and the total number of those patients presenting to outpatient clinics with influenza-like illness.

Percentage of Persons Presenting to Outpatient Clinics with Influenza-Like Illness (ILI)

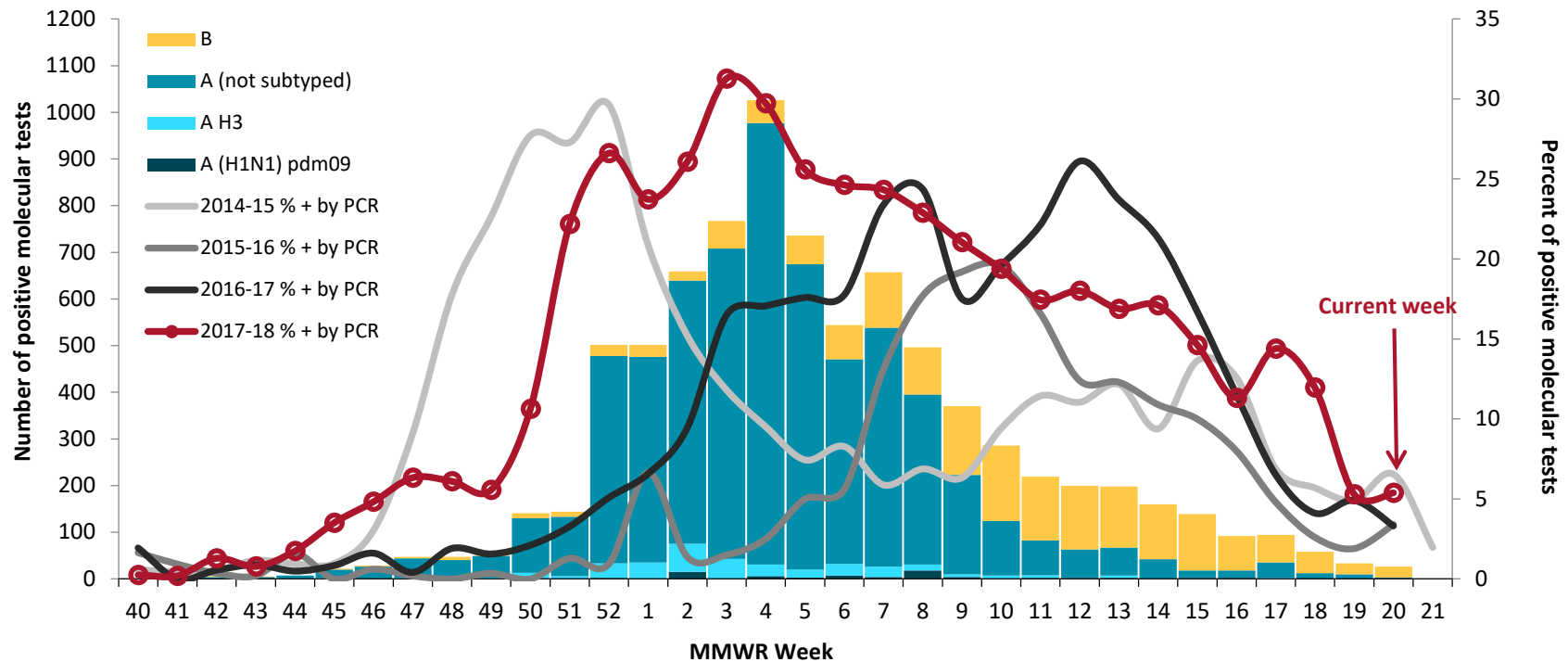


* Indicates current week-data may be delayed by 1 or more weeks

Laboratory Surveillance

The MN Lab System (MLS) Laboratory Influenza Surveillance Program is made up of more than 310 clinic- and hospital-based laboratories, voluntarily submitting testing data weekly. These laboratories perform rapid testing for influenza and Respiratory Syncytial Virus (RSV). Significantly fewer labs perform PCR testing for influenza and three also perform PCR testing for other respiratory viruses. MDH-PHL provides further characterization of submitted influenza isolates to determine the hemagglutinin serotype to indicate vaccine coverage. Tracking the laboratory results assists healthcare providers with patient diagnosis of influenza-like illness and provides an indicator of the progression of the influenza season as well as prevalence of disease in the community.

Specimens Positive for Influenza by Molecular Testing*, by Week

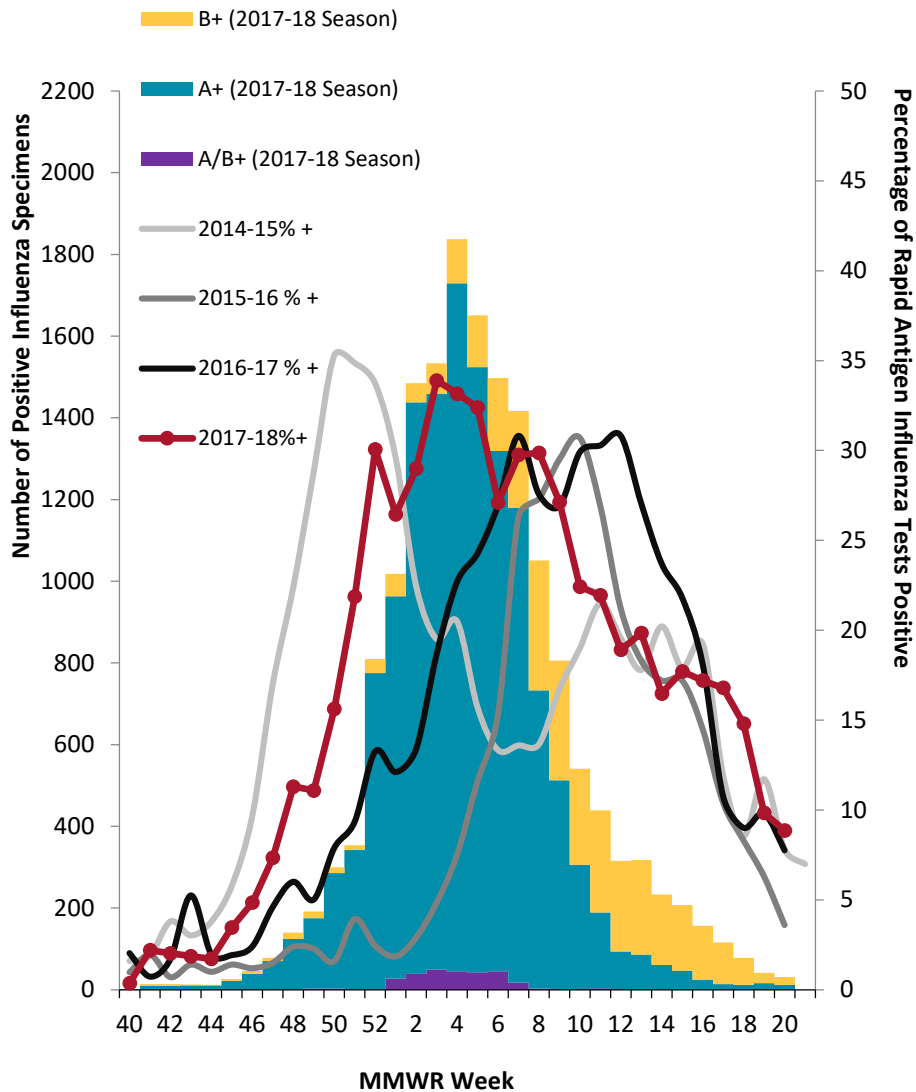


* Beginning in 2016-17, laboratories report results for rapid molecular influenza tests in addition to RT-PCR results

Laboratory Surveillance (continued)

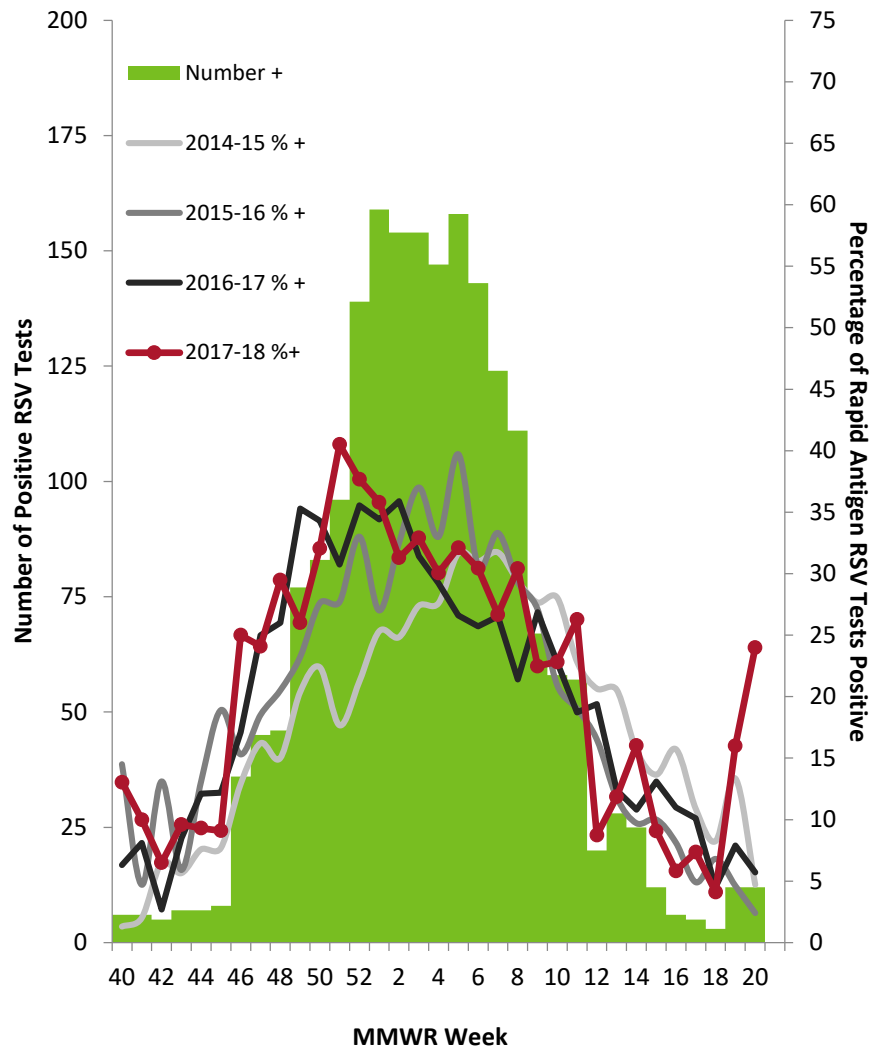
MLS Laboratories – Influenza Testing

Specimens Positive by Influenza Rapid Antigen Test, by Week



MLS Laboratories – RSV Testing

Specimens Positive by RSV Rapid Antigen Test, by Week



Weekly U.S. Influenza Surveillance Report

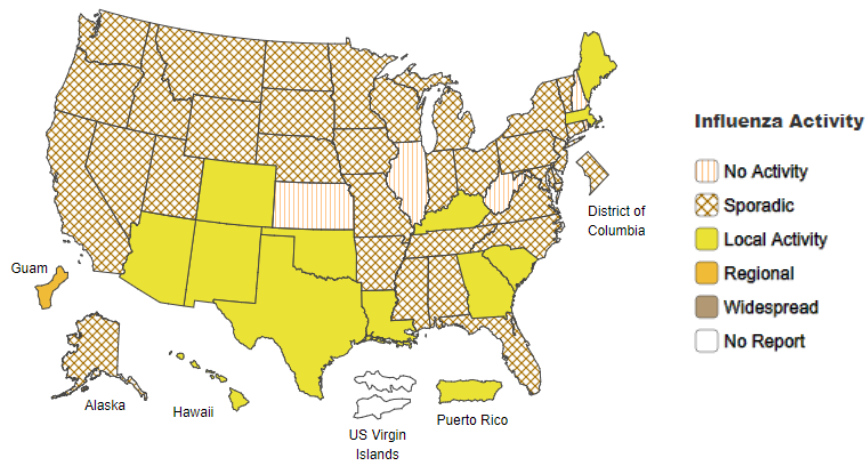
2017-2018 Influenza Season Week 42 ending October 21, 2017

National Influenza Surveillance (CDC): <http://www.cdc.gov/flu/weekly/>

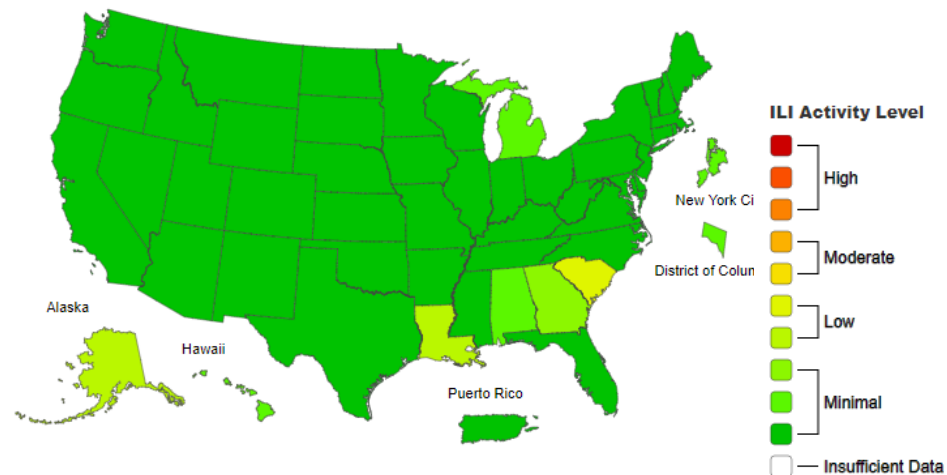
During week 42 (October 15-21, 2017), influenza activity was low in the United States.

- **Viral Surveillance:** The most frequently identified influenza virus type reported by public health laboratories during week 42 was influenza A. The percentage of respiratory specimens testing positive for influenza in clinical laboratories is low.
- **Novel Influenza A Virus:** One human infection with a novel influenza A virus was reported.
- **Pneumonia and Influenza Mortality:** The proportion of deaths attributed to pneumonia and influenza (P&I) was below the system-specific epidemic threshold in the National Center for Health Statistics (NCHS) Mortality Surveillance System.
- **Influenza-associated Pediatric Deaths:** One influenza-associated pediatric death was reported.
- **Outpatient Illness Surveillance:** The proportion of outpatient visits for influenza-like illness (ILI) was 1.3%, which is below the national baseline of 2.2%. All 10 regions reported ILI below region-specific baseline levels. Three states experienced low ILI activity and New York City, the District of Columbia, Puerto Rico and 47 states experienced minimal ILI activity.
- **Geographic Spread of Influenza:** The geographic spread of influenza in Guam was reported as regional; Puerto Rico and 12 states reported local activity; the District of Columbia and 33 states reported sporadic activity; five states reported no activity; and the U.S. Virgin Islands did not report.

A Weekly Influenza Surveillance Report Prepared by the Influenza Division
Weekly Influenza Activity Estimates Reported by State and Territorial Epidemiologists*



A Weekly Influenza Surveillance Report Prepared by the Influenza Division
Influenza-Like Illness (ILI) Activity Level Indicator Determined by Data Reported to ILINet



*This map indicates geographic spread and does not measure the severity of influenza activity.